

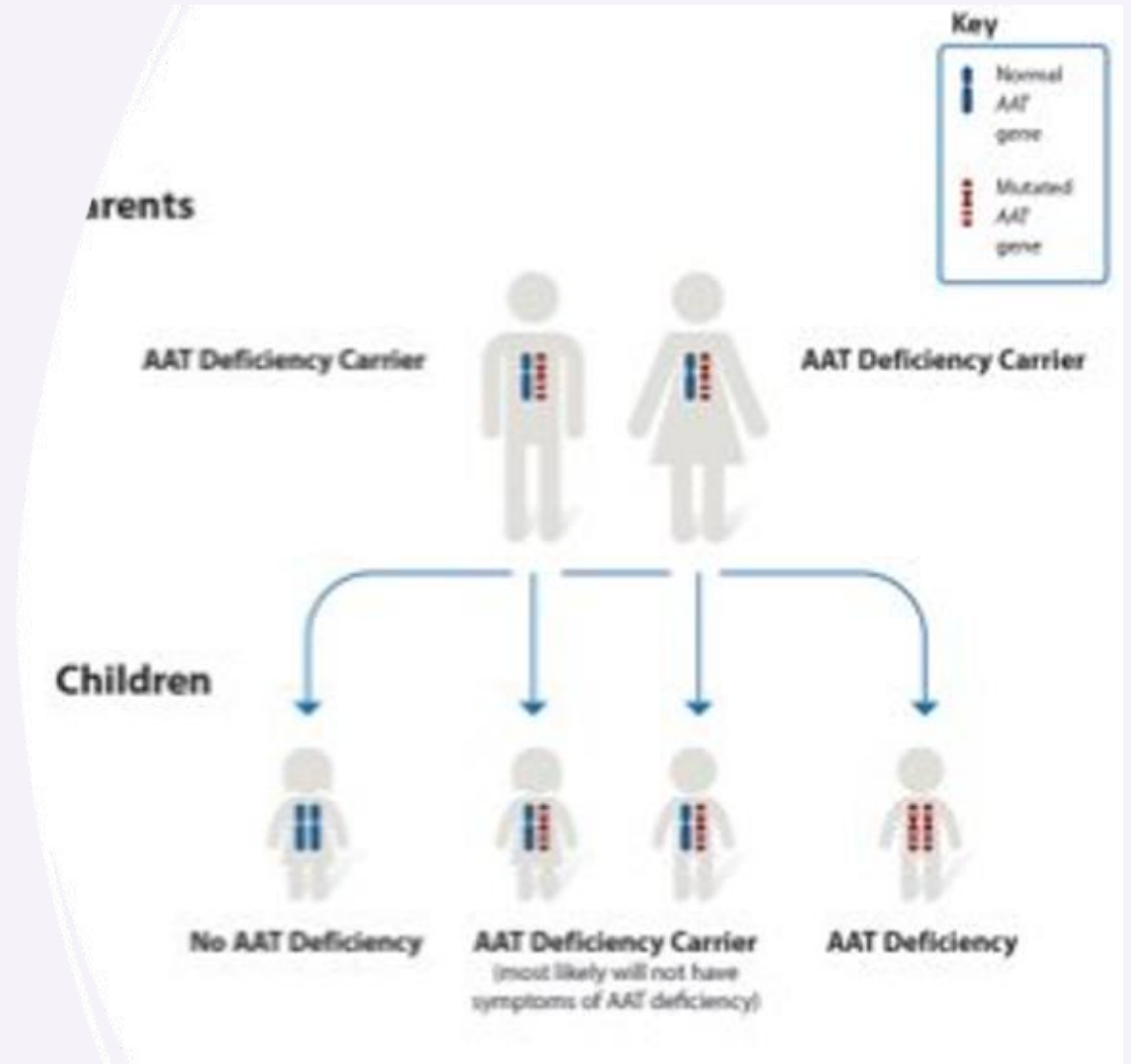
Alpha-1 Medications

CLINICAL SUPERVISORS



What is Alpha-1 Deficiency?

- Alpha₁ antitrypsin (A₁AT) deficiency, or Alpha-1 for short, is a hereditary and progressive condition that affects lungs and liver.
- It's passed down from parent to child through their genes.
- Because of this, **Alpha-1 lung disease is commonly called "genetic COPD."**



- [What is Alpha-1? \(alphaid.com\)](http://alphaid.com)

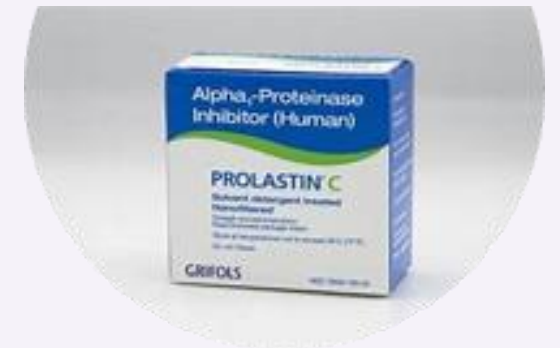
Common Alpha-1 Medications

ARALAST

GLASSIA

PROLASTIN

ZEMARIA



Alpha 1 Dose +/- %

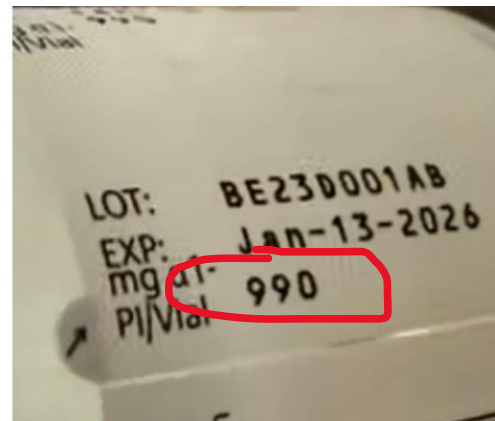
Infuse Aralast 5252 mg (+/-15%) intravenously once weekly via a rate-controlled device.
Infuse over approximately 15 minutes at a rate not to exceed 0.2 mL/kg/min as tolerated by patient.

Select appropriate number of vials required to prepare the dose. There is a +/- deviation allowed for dosing, so the total mg to be infused should fall within that deviation of the dose.

Often it is 15% but can be 10%. Please look at orders carefully.

Chart the EXACT dose you gave.

$5252 - 15\% = 4464$
 $5252 + 15\% = 6039$
Dose to be given will
fall between 4464mg and
6039 mg.



Dose is 5252 +/-15%
Each vial contains 990mg so you
would use 5.3 vials for 5252.
However, $990 \times 5 = 4950$ mg
and this falls within the range
given on orders.
So, use 5 vials

Each Alpha-1 Medication is given following these basic steps.

- ALWAYS be sure you have everything you need to complete the visit from start to finish
 - ALWAYS establish IV access prior to mixing any meds
 - Use aseptic technique to prepare medication.
- Inspect the medication vial for particulate material and discoloration prior to dilution. It should appear colorless to slightly yellow.
 - Select appropriate number of vials required to prepare the dose.
- Remove the flip off cap from the vials and wipe the top of the vial with an alcohol swab.
 - Withdraw the liquid from each vial until the appropriate dose is reached.
 - Transfer the medication into an empty IV bag.
 - You may use a syringe and needle to inject the medication into the bag.

Transferring Medication to Pooling Bag

ATTACH A LARGE GAUGE NEEDLE TO INJECTION PORT OF POOLING BAG, AND TAPE IN PLACE.



USING TRANSFER SPIKE OR LARGE GAUGE NEEDLE, WITHDRAW NEEDED ALPHA-1 MEDICATION FROM VIAL



ATTACH MICRO-CLAVE TO NEEDLE, AND THEN USE THIS SET UP TO TRANSFER MEDICATION FROM SYRINGE INTO BAG, THIS REDUCES THE NUMBER OF NEEDLE STICKS INTO BAG. ONCE ALL MEDICATION IS POOLED, REMOVE TAPE, MICRO-CLAVE AND NEEDLE.



SPIKE BAG OF PREPARED ALPHA 1 MEDICATION AND INFUSE PER MD ORDERS



ADMINISTRATION STEPS

- Step 1: Allow solution to warm to room temperature.
- Step 2: Draw up correct dose, transfer medication to an empty IV bag and spike the IV bag with the proper administration tubing. This medication is most often infused via gravity/dial a flow tubing.
Alpha 1 medications require an inline filter
- The dose should go over a minimum of 15 minutes- be sure to check orders for rate.
 - Step 3: Monitor Pt for any infusion reactions.
 - Step 4: Once infusion is complete, flush IV with 10ml of NS.
 - Step 5: Record vitals at baseline and at infusion end.
If infusion is longer than 15 minutes, vitals are required Q 15 minutes for the 1st hour then hourly and post infusion.
- Remember to record lot number and expiration dates for all vials used.

HHC Policy for Alpha-1 Medications

Helms Home Care POLICY: ALPHA-1

DIAL-A-FLOW

▶ [HOW TO SETUP DIAL-FLOW TUBING - Video](#)



Aralast

- ▶ [Aralast Dose and Admin Guide](#)
- ▶ [Aralast Website](#)



Glassia

[Glassia Dose and Admin Guide](#)

Use a vented spike to draw up the medication from the Glassia bottle with a 60 ml syringe

DO NOT use the micron needle that is provided to withdraw the Glassia from the bottle.

The 5-micron needle provided in the box is to be used when filling the pooling bag.

Must also use a in-line 5-micron filter to infuse.

[Transfer Glassia Video](#)



Prolastin

[Prolastin Website](#)



Zemaira

[Zemaira Website](#)

[ZEMAIRA Mix to Vial Transfer](#)



Links to Alpha 1 Education Videos

- [Prolastin Resources Link](#)
- Alpha 1 infusion day video- [Alpha 1 Infusion Day Video](#)
 - Pooling Video - [Pooling Medication Video](#)
- Understanding Alpha 1 video - [Understanding Alpha 1](#)
 - [What is Alpha 1?](#)

TEAMS

When responding to messages in Teams be sure to tag the proper person/team.
BEST practice is to use @Teamhelp-CareCoordination

For Clinical issues:

- Use tags @Teamhelp-CareCoordination and @Teamhelp-Clinical

(The @TeamHelp-Clinical tag should ONLY be used during business hours Monday - Friday, 8a - 4p).

- **During afterhours (which includes evenings and the weekends) you should submit a nurse ticket for any issues or questions.**
 - [After Hours Clinical Help Ticket](#)

For Care Coordination issues:

- Need to reschedule visit? Pt cancelled. Pt not home. No supplies, etc.
 - Use tag @Teamhelp-CareCoordination
- ***Do not send a direct chat message***
- Messages sent without the proper tag may be missed.

ANAPHYLAXIS KIT

- Always check the ANA kit for the date of expiration and that it is intact and complete PRIOR to starting IV and PRIOR to spiking medications.
- If the ANA kit is expired or not intact **DO NOT** proceed but contact Helms immediately.
- If the ANA kit will expire prior to the next visit, contact Helms and let the agency know to request a new kit from pharmacy. Also, request a new kit on the supply request form.
- Document the expiration date and that the kit is intact on every visit in your nurse's note.



Supplies

Acute Care Patients: (Abx and TPN patients)

Patient is to contact their pharmacy for refills and supplies, You can leave a supply list for patient if needing certain things. Ie: Different dressings, gloves

Chronic Care Patients: (Infusion Patients)

RN is to complete a supply inventory at each visit and complete a supply request.

Attach supply request with visit note in Logiforms

[Supply Request \(Pharmacy\) \(helmshomecare.com\)](https://www.helmshomecare.com)

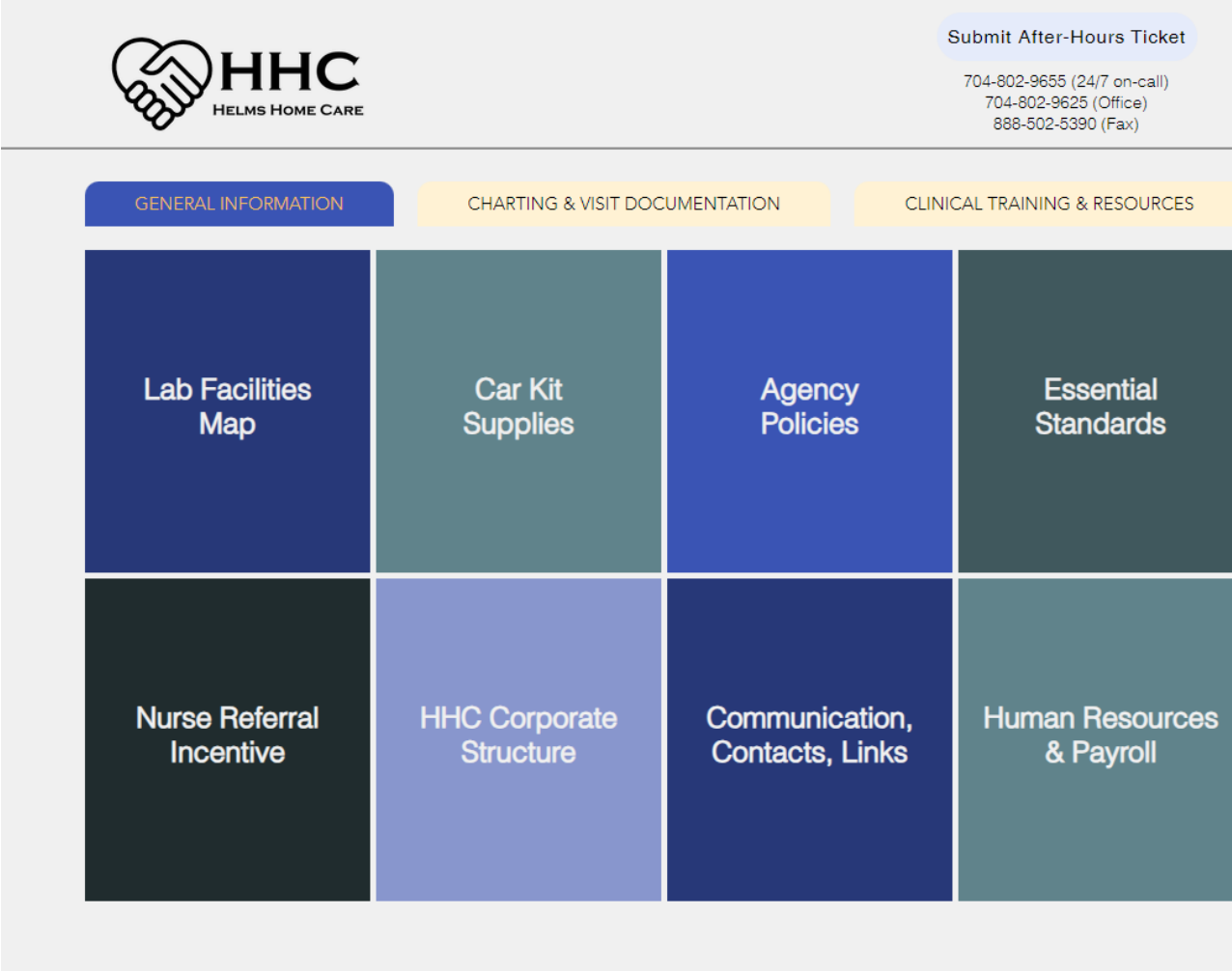
RN Car Kit Refills: Use this link. Supply shipment takes 7 business days

[Supply Request \(RN Car Kit\) \(helmshomecare.com\)](https://www.helmshomecare.com)

If you need lab tubes - Ask at a hospital lab for tubes.

HHC Resources Page

- [Helms Home Care Resources Page](#)
- This Page has a TON of great info
- Links to Schoox
- Logiforms - Documentation tips
- Links to order supplies
- Link to After Hours Ticket



The screenshot displays the Helms Home Care (HHC) website's resources page. At the top left is the HHC logo, featuring a heart with hands and the text 'HHC HELMS HOME CARE'. To the right is a 'Submit After-Hours Ticket' button and contact information: 704-802-9655 (24/7 on-call), 704-802-9625 (Office), and 888-502-5390 (Fax). Below the header are three navigation tabs: 'GENERAL INFORMATION' (highlighted in blue), 'CHARTING & VISIT DOCUMENTATION' (yellow), and 'CLINICAL TRAINING & RESOURCES' (yellow). The main content area is a 2x4 grid of resource tiles:

Lab Facilities Map	Car Kit Supplies	Agency Policies	Essential Standards
Nurse Referral Incentive	HHC Corporate Structure	Communication, Contacts, Links	Human Resources & Payroll

THANK YOU!



- **We would like you to know how much we value all of you.**
 - **Please urge your patients to fill out the patient survey.**
 - **Please also complete the staff Feedback survey**
 - Patient / Client Feedback (Survey)
 - Staff Feedback (Survey)